

SONY[®]

Printer Driver

Installation Guide

This guide describes installation and use of the Printer Drivers for Windows XP and Windows 2000.

Before Using this Software

Before using the printer driver, be sure to read the “ReadMe” file located on the CD-ROM.

UP-CR10 Series

Table of Contents

Operation Environment Requirements	3
About This Document	3
Installing the Printer Driver	4
Before Installation	4
Printer Driver Installation Under Windows XP ..	5
Printer Driver Installation Under Windows 2000	6
Uninstalling the Printer Driver	8
Configuring the Printer	9
[Paper] Tab	9
[Graphics] Tab	10

Microsoft and Windows are registered trademarks of Microsoft Corporation.
Other company names and product names mentioned in this guide are also trademarks and registered trademarks.

Operation Environment Requirements

The system requirements for use of the printer driver are as follows.

- Computer running Microsoft Windows XP Professional/Home Edition

or

- Computer running Microsoft Windows 2000 Professional

About USB 2.0

- The UP-CR10 series conforms to USB 2.0 specifications.
- USB 2.0 is fully backward compatible with USB 1.1.
- USB 2.0 supports conventional Full (low) speed and Hi-Speed operation.
- In a USB 1.1 environment, connection and operation at Full speed is possible. For Hi-Speed operation, the following requirements must be met.
 - Computer
Computer supporting Hi-Speed USB (USB 2.0 compliant)*
 - Operating system
Microsoft Windows 2000 Professional/Microsoft Windows XP Professional/Windows XP Home Edition
 - USB 2.0 driver
USB 2.0 device driver produced by Microsoft Corporation (Operation with other USB 2.0 drivers is not guaranteed.)
 - Certified USB 2.0 cable

* Compatibility with all USB 2.0 devices, USB 2.0 expansion boards, or expansion cards cannot be guaranteed.

Note

When the UP-CR10 series printer is connected and turned on, ensure that the computer does not go into standby (suspended) or hibernation mode. Otherwise correct operation is not assured.

About This Document

The explanation of Control Panel operations in this document assumes that Windows XP is used in Classic View. To switch to Classic View, click [Start], select [Control Panel], and click [Switch to Classic View] in the Control Panel Properties shown on the left side of the screen.

The screen messages and other information shown in the section “Printer Driver Installation Under Windows XP” assume connection of the UP-CR10L. If another printer model from the UP-CR10 series is connected, read any occurrence of “UP-CR10L” as the model name of your printer.

Installing the Printer Driver

Before Installation

About version upgrades


If you are upgrading a printer driver, remove the previous printer driver before beginning the installation. For details on the procedure to remove the printer driver, refer to the section “Uninstalling the Printer Driver” in this guide.

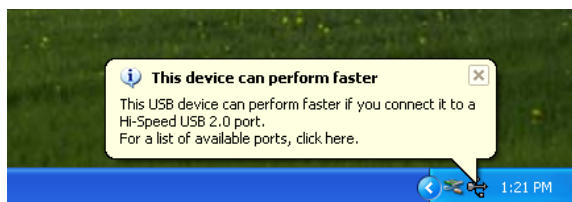
If the installation fails or is cancelled, restart your computer before attempting the installation again.

Note

Be sure to restart your computer after installing or uninstalling the printer driver. Unless you reboot, unstable operation may result.

USB 2.0 connection

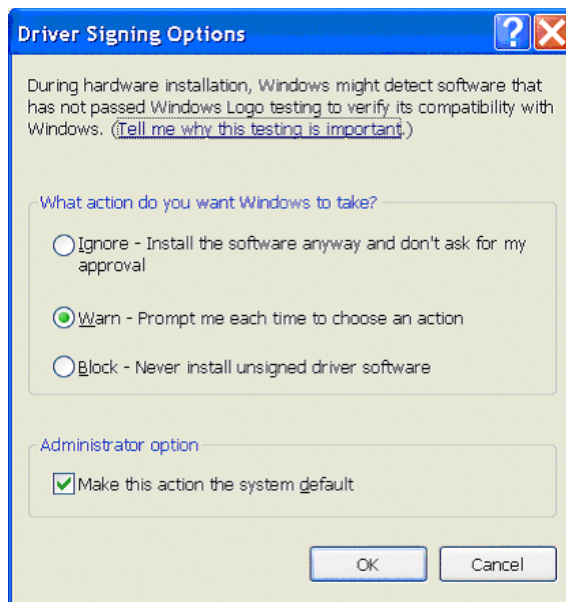
The UP-CR10 series is compatible with USB 2.0. However, if your computer or USB hub is not USB 2.0-compliant, the following message appears when you connect the UP-CR10 series printer. Click  to close the message.



About Driver Signing Options

The present printer driver has not passed Windows Logo testing, therefore when you install the driver an error message may appear, preventing you from installing the driver.

In the [Driver Signing Options] dialog box, select [Ignore] or [Warn] in the [What action do you want Windows to take?] group box. If you select [Block], you cannot install the printer driver.



Open the [Driver Signing Options] dialog box as follows:

- 1 On the [Start] menu, click [Control Panel]. (Under Windows 2000, click [Start], select [Settings], and click [Control Panel].)
- 2 Double-click [System]. The [System Properties] dialog box opens.
- 3 Click the [Hardware] tab.
- 4 Click the [Driver Signing] button.

All the explanations in this guide assume that the setting in this dialog box is [Warn].

Connecting multiple printers

When several UP-CR10 series printers are connected to a computer running Windows XP, install the printer driver for each printer according to the explanation in “Printer Driver Installation Under Windows XP”.

When using Windows 2000, you can simply connect the second and subsequent printers, and installation will be carried out automatically.

Note

For installation of subsequent printers, install each printer separately.

Printer Driver Installation Under Windows XP

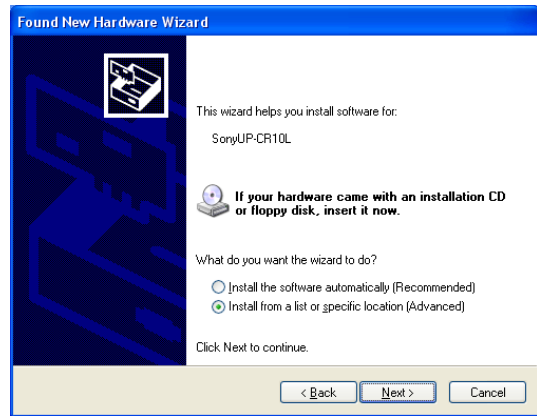
- 1 Connect the UP-CR10 series printer (one only) for which the driver is to be installed to the computer.
- 2 Turn power to the connected UP-CR10 series printer on.
- 3 Turn power to the computer on, and log on as the system administrator or a member of the Administrators group.

The [Found New Hardware Wizard] appears.



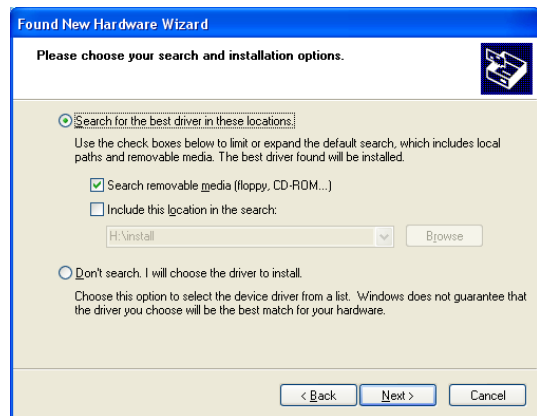
- If the [Found New Hardware Wizard] screen looks like that shown in step 3, proceed to step 4.
- If the [Found New Hardware Wizard] screen looks different from that shown in step 3, proceed to step 5.
- If the [Found New Hardware Wizard] screen does not appear, perform the steps described below, with the UP-CR10 series printer for which the printer driver is to be installed turned on and connected to the computer. (Any other USB printers or previously installed UP-CR10 series printers should not be connected at this time.)
 - ① Click [Start] and select [Control Panel].
 - ② Double-click [System].
The [System Properties] dialog box opens.
 - ③ Click the [Hardware] tab.
 - ④ Click [Device Manager].
The [Device Manager] window opens.
 - ⑤ Click [+] at the left of [Universal Serial Bus controllers].
 - ⑥ Select [USB Printing Support], right-click and open the Properties. Confirm that [UP-CR10] is selected for [Location], and then select [Uninstall] from the [Action] menu.
 - ⑦ Restart the computer.
The [Found New Hardware Wizard] appears.

- 4 Click [No, not this time] and click [Next].



- 5 Select [Install from a list or specific location (Advanced)], and then click [Next].

The screen changes as follows.



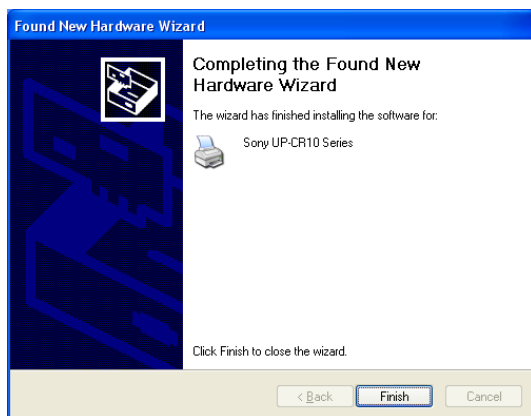
- 6 Select [Search for the best driver in these locations], select [Search removable media (floppy, CD-ROM)], and then insert the supplied CD-ROM “PRINTER DRIVER & INSTRUCTIONS FOR USE UP-CR10L” into the CD-ROM drive.
- 7 Click [Next].

The following dialog box appears.



- 8 Click [Continue].

After the files are copied, the following screen appears.



- 9 Click [Finish].
- 10 Restart the computer.

This completes the installation of the printer driver.

Printer Driver Installation Under Windows 2000

- 1 Connect the UP-CR10 series printer (one only) for which the driver is to be installed to the computer.
- 2 Turn power to the connected UP-CR10 series printer on.
- 3 Turn power to the computer on, and log on as the system administrator or a member of the Administrators group.

The [Found New Hardware Wizard] appears.



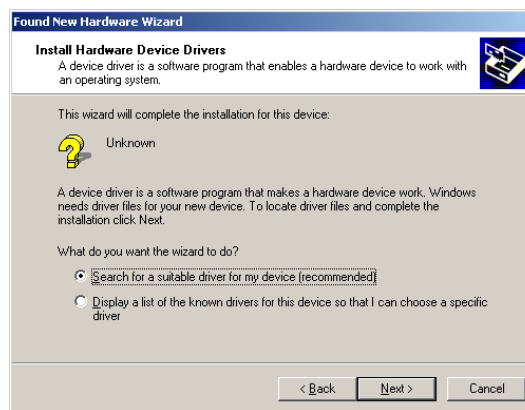
If the [Found New Hardware Wizard] does not appear

Perform the steps described below, with the UP-CR10 series printer for which the printer driver is to be installed turned on and connected to the computer. (Any other USB printers or previously installed UP-CR10 series printers should not be connected at this time.)

- 1 Click [Start], select [Settings], and select [Control Panel].
- 2 Double-click [System].
The [System Properties] window opens.
- 3 Click the [Hardware] tab.
- 4 Click [Device Manager].
The [Device Manager] window opens.
- 5 Click [+] at the left of [Universal Serial Bus controllers].
- 6 Select [USB Printing Support], right-click and open the Properties. Confirm that [UP-CR10] is selected for [Location], and then select [Uninstall] from the [Action] menu.
- 7 Restart the computer.
The [Found New Hardware Wizard] appears.

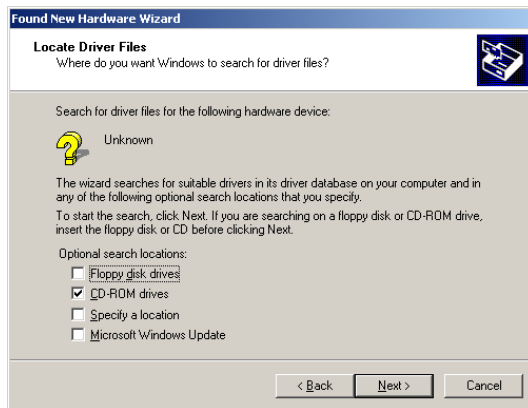
- 4 Click [Next].

The screen changes as follows.



- 5 Select [Search for a suitable driver...] and then click [Next].

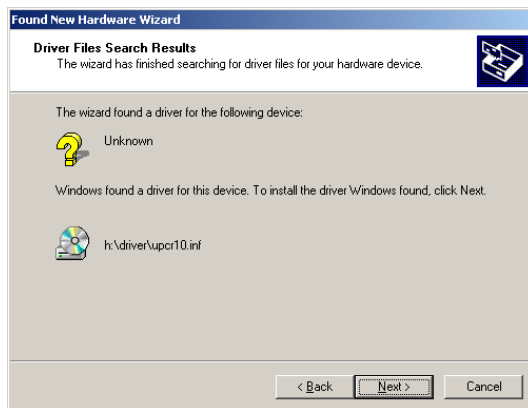
The screen changes as follows.



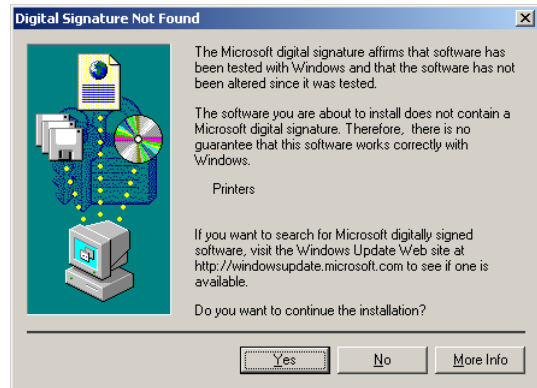
- 6 Select [CD-ROM drives], and then insert the supplied CD-ROM “PRINTER DRIVER & INSTRUCTIONS FOR USE UP-CR10L” into the CD-ROM drive.

- 7 Click [Next].

The screen changes as follows.

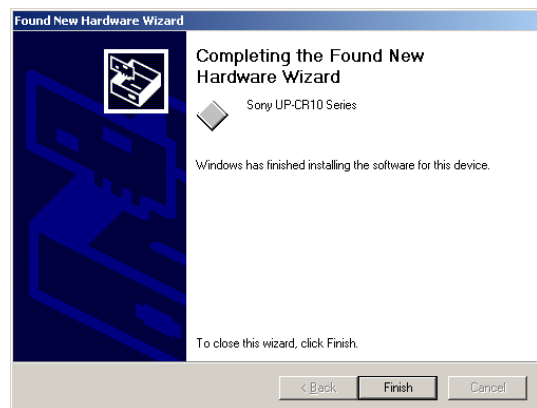


- 8 Click [Next].



If the [Digital Signature Not Found] dialog box appears, click [Yes].

The screen changes as follows.



- 9 Click [Finish].

- 10 Restart the computer.

This completes the installation of the printer driver.

Note

If you select [Cancel] in step 7 or [No] in step 8, the [Found New Hardware Wizard] may not appear during the next installation. In that case, perform the procedure described in “If the [Found New Hardware Wizard] does not appear” of step 3.

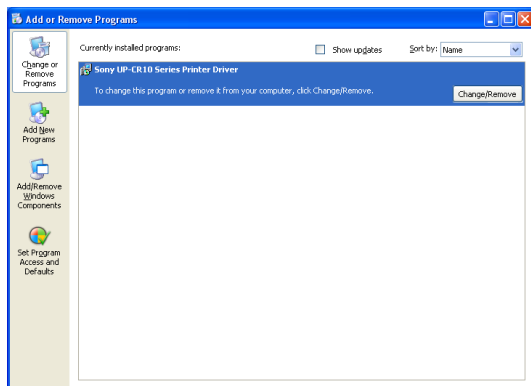
Uninstalling the Printer Driver

This section describes how to remove the printer driver.

Notes

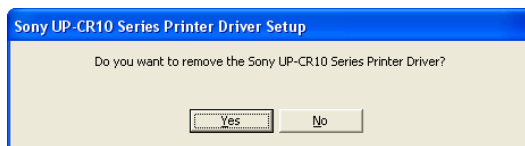
- When starting the uninstallation procedure, the printer should not be connected to the computer. If the [Found New Hardware Wizard] screen appears, disconnect the cable between the computer and printer, click [Cancel] on all screens to terminate the wizard, and then start the uninstallation procedure once more.
- If the uninstallation procedure is carried out with multiple instances of the printer driver installed, all drivers for UP-CR10 series printers (printer icons) will be uninstalled.

- 1 Turn power to the UP-CR10 series printer off and disconnect the cable between the computer and printer.
- 2 Turn power to the computer on, and log on as the system administrator or a member of the Administrators group.
- 3 Click [Start] and select [Control Panel]. Then select [Add or Remove Programs]. (Under Windows 2000, click [Start], select [Settings], and click [Control Panel]. Then select [Add/Remove Programs].)



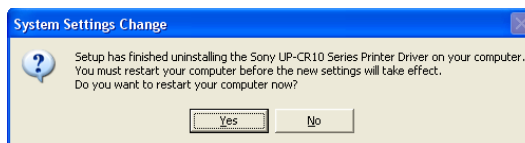
- 4 From [Currently installed programs], select [Sony UP-CR10 Series Printer Driver], and then click [Change/Remove].

The following dialog box appears.



- 5 Click [Yes].

When the printer driver has been uninstalled, the following dialog box appears.



- 6 Click [Yes].

The computer restarts.

This completes the printer driver uninstallation procedure.

Configuring the Printer

Before printing from an application, you should make the required printer properties settings.

To call up the printer properties window, use one of the following methods.

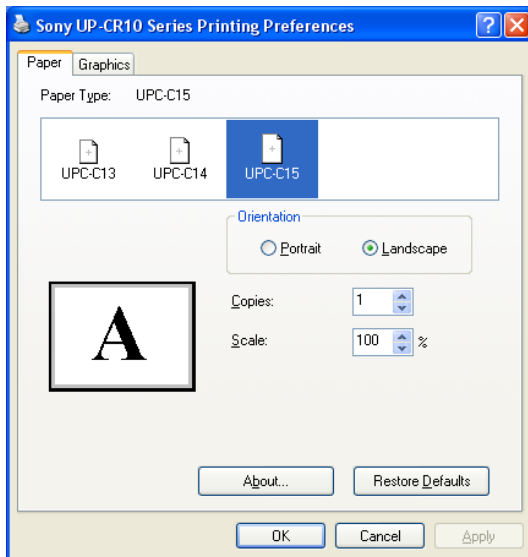
- Click [Start] and then [Control Panel]. Select [Printers and Faxes]. (Under Windows 2000, click [Start], select [Settings], and click [Printers].) Select the Sony UP-CR10 series printer icon, then click [Printing Preferences] on the [File] menu. Settings made in this way are used as default settings when printing from applications.
- On the [File] menu of your application, click the item for making printer settings. Settings made in this way only remain valid until you close the application.

This section describes the settings available under the tabs in [UP-CR10 Series Properties].

The explanation uses the screens as they appear in Windows XP. Setting items and setting procedures are the same in Windows 2000.

[Paper] Tab

This tab is used for making basic printing settings.



Paper Type

Select either [UPC-C13], [UPC-C14], or [UPC-C15] for the paper type.

The relation between the type of paper that can be inserted in the printer and the maximum print size is as follows.

Paper Type	Maximum print size (with landscape orientation)
UPC-C13	1,536 × 1,100 (pixels)
UPC-C14	1,848 × 1,248 (pixels)
UPC-C15	2,148 × 1,536 (pixels)

Orientation

Select “Portrait” or “Landscape”.

Copies

Select the number of copies

The setting range is 1 to 100 copies.

Scale

Lets you enlarge or reduce the image for printing. The setting range is 10% to 400%, specified as a numeric value.

About...

Brings up information about the printer driver version.

Restore Defaults

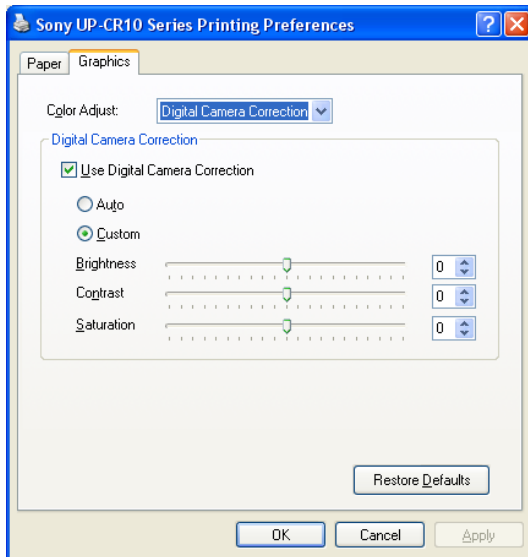
This returns all [Paper] tab settings to their default condition.

[Graphics] Tab

This tab is used for making color, brightness, and other image related settings. From the [Color Adjust] combo box, you can select [Digital Camera Correction], [Color Balance], or [Lightness], and make the respective settings.

Digital Camera Correction

Select [Digital Camera Correction] from the [Color Adjust] combo box.

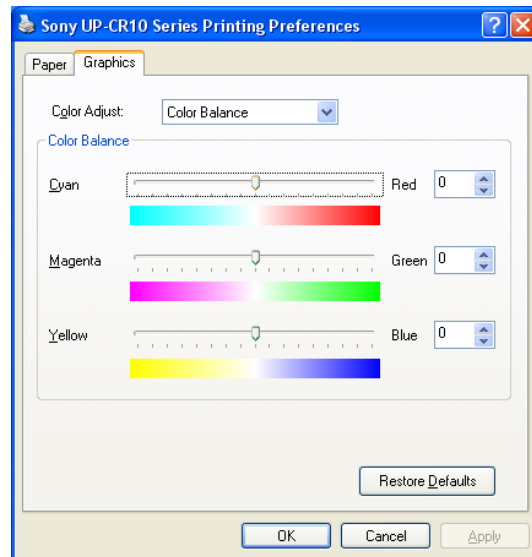


When you select the [Use Digital Camera Correction] check box, the settings become available.

- Selecting [Auto] will cause automatic processing for optimum results.
- Selecting [Custom] causes the sliders for [Brightness], [Contrast] and [Saturation] to become active. Adjust the items by moving the respective sliders left or right. You can also directly enter values in the input fields.

Color Balance

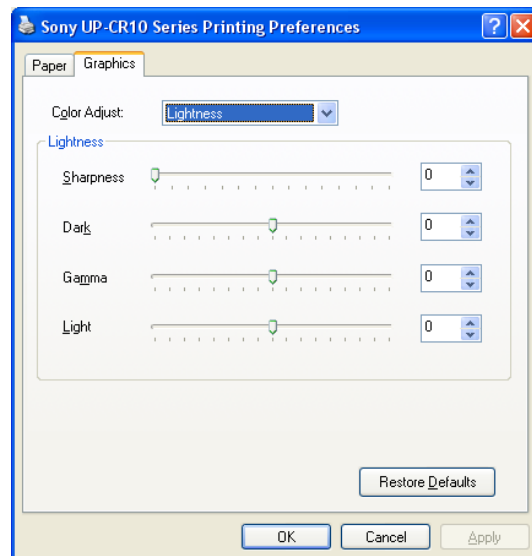
Select [Color Balance] from the [Color Adjust] combo box.



Adjust the items by moving the respective sliders left or right. You can also directly enter values in the input fields.

Lightness

Select [Lightness] from the [Color Adjust] combo box.



Adjust the items by moving the respective sliders left or right. You can also directly enter values in the input fields.

Restore Defaults

This returns all [Graphics] tab settings to their default condition.